



**SUMMER  
2024**

# Gateway

Special Recreation Association

**Dedication • Respect • Support • Fun!**



*Hey Kids, check out Sports Medley on page 4!*

## • Serving These Communities •

- ~ Village of Hinsdale ~ Elmhurst Park District ~ Burr Ridge Park District ~ Oak Brook Park District
- ~ Pleasant Dale Park District ~ Village of Countryside ~ Village of Willowbrook
- ~ York Center Park District ~ Westchester Park District

# Gateway Special Recreation Association

Creating Boundless Community Recreation Opportunities Since 1989

Gateway Special Recreation Association (SRA) was formed through an intergovernmental agreement and is an extension of the Park Districts of Burr Ridge, Elmhurst, Oak Brook, Pleasant Dale, Westchester and York Center and the Villages of Hinsdale, Willowbrook, and Countryside.

Gateway SRA contracts the services of Ray Graham Association for People with Disabilities, a non-profit agency, to provide therapeutic recreation programs. Ray Graham Association has been serving the needs of people with disabilities and their families for more than fifty years.

Gateway SRA promotes the full participation of people with disabilities in meaningful activities that maximize their health, well-being, and quality of life. Recreation is a central component of a healthy lifestyle. This philosophy is carried out through all our recreation and sports programs and services for people with disabilities.

## Mission Statement

Gateway SRA strives to expand people's lives through therapeutic recreation activities to reach, grow and achieve.

## 4 Core Values

**Dedication, Respect, Support, FUN!**

## Board of Directors

Burr Ridge Park District

**Jim Pacanowski - Chair**

15W400 Harvester Dr.

Burr Ridge, IL 60527

630.920.1969

Elmhurst Park District

**Sara Lagesse- Trustee**

225 Prospect Ave

Elmhurst, IL 60126

630.993.4729

Hinsdale Recreation Dept.

**Mike Hayes - Trustee**

19 E. Chicago Ave

Hinsdale, IL 60521

630.335.6588

Oak Brook Park District

**Michael Contreras - Secretary**

1450 Forest Gate Rd.

Oak Brook, IL 60523

630.990.4233

Village Of Countryside

**Michelle Sullivan - Trustee**

5550 East Ave

Countryside, IL 60525

708.473.1098

Pleasant Dale Park District

**Matt Russian - Treasurer**

7425 S Wolf Rd

Burr Ridge, IL 60527

630.662.6220

Westchester Park District

**Tom Yurkovich - Trustee**

10201 Bond St

Westchester, IL 60154

708.865.8200

Willowbrook Parks and Rec.

**Dustin Kleefich - Trustee**

835 Midway Drive

Willowbrook, IL 60527

630.323.8215

York Center Park District

**Jeremy Fila - Trustee**

1609 South Luther Ave

Lombard, IL 60148

630.629.0886

BOARD MEETINGS ARE HELD ON THE 2ND THURSDAY OF EACH MONTH AT 3:00PM AT THE OAK BROOK PARK DISTRICT, LOCATED AT 1450 FOREST GATE ROAD, OAK BROOK, IL 60523. EVERYONE IS WELCOME AND ENCOURAGED TO ATTEND.

## Administration

Ray Graham Association - Hanson Center

5W431 59th St

Burr Ridge, IL 60527

630-325-3857, press 2 for GSRA

**Ryan Massengill**

Superintendent of Recreation

630.325.3857, press 2 for GSRA

ryanm@raygraham.org



**Michael Baig**

Recreation/Vehicle Coordinator

630.325.3857, press 2 for GSRA

mibaig@raygraham.org

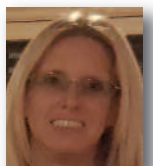


**Carolyn Strasen**

Recreation/Sports Coordinator

630.325.3857, press 2 for GSRA

carolyns2@raygraham.org



**Brenna Dill**

Recreation/Day Camp

Coordinator

630.325.3857, press 2 for GSRA

bdill@raygraham.org



**Dear Gateway SRA Community,**

Warm weather greetings to all! 2024 has sure been an exciting year so far. We have had lots of new adventures and visited several memorable places that have taken us across the Chicagoland area. Many of our new programs such as Pickleball, Eagle Watch, Everyone's Birthday and Friday fitness classes have hit the ground running! As we move into the busiest and most fun season for recreation, we are excited to continue to bring additional new programs to our line-up. This summer we will be offering a variety of health and wellness activities, unified Special Olympic bocce, and frisbee golf, just to name a few. New this summer we have expanded our Tuesday and Thursday Travelers program to provide more opportunities for people to get out, cultivate friendships and try new recreation experiences. Similar to our Friday night social clubs, we are offering a "northern" and "southern" geographic meeting location. Groups will still go out each week for brunch/lunch and then onto the days adventure. Our hope is that we can expand these two great programs and offer experiences to more people and make new friends. Summer wouldn't be complete without our funtastic summer day camp! We began camp registration earlier this year and in preparation for camp we have hired amazing counselors, booked thrilling field trips, and invited some special guests to enhance our campers' days. Many of our families share with us throughout the year how much their camper loves camp and looks forward to it every year. As a former camp counselor myself, it is exciting to see our counselors create so many lasting and impactful relationships with our kiddos.

I can still remember each camper and co-worker I had the pleasure to work with over 20 years ago. Some of the people I worked with are still close friends of mine and now work in the field of recreation. When we talk about working summer camp, its more than just a job, it's a life changing experience. As you read this if you can think of any person in your life that could benefit from this life changing experience encourage them to apply to be a camp counselor. We are more than just co-workers at Gateway SRA we're a TEAM and TEAMWORK, MAKES THE DREAM WORK! With that being said, I would also like to take this opportunity to say THANK YOU to, Isabel, Jessica, Nike, Brianna F, Brianna C, Mike D, Charlie, Alex, Natalia, Justina, Olivia, Ashley, Kaylee, Brenna, Carolyn, and Mike. All of you play an intricate role in the lives of the people we support each day. Your dedication is unwavering, your creativity is inspiring, your innovation to keep people involved, engaged, and trying new things is extraordinary. Thank you for all your hard work! Now let's have a FUN SUMMER!!

Best Regards,

**Ryan Massengill**  
Superintendent of Recreation  
Gateway SRA/Ray Graham Association

## SUMMMER SCHEDULE

**Summer Session: June 10 – August 10**

**Registration Begins: April 15**

**Registration Deadline on June 3**

## TABLE OF CONTENTS

Board of Directors/Staff .....	Inside Front Cover
On-Line Registration .....	Page 1
We're Hiring Ad .....	Page 2
Health and Wellness .....	Page 3
Gators Athletics .....	Page 4
Youth Program, Gator Club, Bowling .....	Page 5
Social Clubs .....	Pages 6-8
Special Events/Summer Vacation Trip .....	Pages 9-10
General Information .....	Pages 11-13
Registration and Waiver .....	Pages 14-15
Health and Contact Form .....	Pages 16-17
Financial Assistance Application .....	Pages 18-19
Winter/Spring Highlighe .....	Page 20
Dates to Remember .....	Back Cover

**Don't forget to check out Gateway SRA**

**website at [gatewaysra.com](http://gatewaysra.com) and**

**Like Us on Facebook!**



# COMMUNITYPASS ONLINE REGISTRATION SOFTWARE SYSTEM

We will be continuing with online registration for programs offered by Gateway Special Recreation Association via the CommunityPass registration system!

**Online registration for summer will open on  
April 15, 2024.**

To create a new account, register an existing account, login or register for a program, follow the instructions found within this email or on the CommunityPass site.



To create a new account, register an existing account, login or register for a program, follow the instructions found within this email or on the CommunityPass site.

***If you already have an existing Community Pass account with another Organization, please follow these steps to register that account with the GSRA:***

1. Go to: <https://register.capturepoint.com/GatewaySRA> OR USE [Click here](#) to go to the Gateway Special Recreation Association CommunityPass site and login to CommunityPass using the login and password for your existing Family account.
2. From the Gateway Special Recreation Association CommunityPass homepage click on the "My Account" tab, select "Update Account Information" and if required, update your profile. If no changes are required, continue to Step 3.
3. On the upper right-hand side of your CommunityPass account, click on the "Log Out" of Community Pass tab. Your account is now active with the Gateway SRA.

## ***How to Create a Family Account:***

1. Go to: <https://register.capturepoint.com/GatewaySRA> OR USE [Click here](#) to go to the Gateway Special Recreation Association CommunityPass site and login to CommunityPass using the login and password for your existing Family account.
2. From the Gateway Special Recreation Association CommunityPass login homepage click on the "Create an Account" tab.
3. On the next page complete the "Account Creation" fields and click on Create at the bottom of the page.
4. On the next page you will see the CommunityPass Privacy Statement. After reading, click 'Accept.' Then click 'Finish.'

Please save your login and password for future use. Only one account per family is permitted.

## ***How to Register for Programs Online:***

1. Go to: <https://register.capturepoint.com/GatewaySRA> OR USE [Click here](#) to go to the Gateway Special Recreation Association CommunityPass site and login to CommunityPass using the login and password for your existing Family account.
2. Click the 'Click Here to Register" button.
3. Select the program(s) you wish to attend.
4. Select the person registering for the program selected, then 'Continue'.
5. Click on Continue Registering if there are other programs you wish to register for and repeat Steps 5-7
6. When finished with selections, click 'Continue to Checkout'.
7. Please follow the remaining steps to complete your registration including making payment via credit card.

**If you have any questions please feel free to reach out to  
Ryan Massengill at 630.325.3857 x110 or [ryanm@raygraham.org](mailto:ryanm@raygraham.org)**



# HIRING

## WHO ARE WE LOOKING FOR?

- Recreational Program Leaders
- Recreation Program Aides
- Summer Day Camp Counselors
- Athletics Coaches
- Volunteers

## THE "BE" ABOUTS

- BE FUN!
- BE CREATIVE!
- BE DEPENDABLE!
- BE DEDICATED!
- BE CARING!
- BE SUPPORTIVE!
- BE RESPONSIBLE!
- BE A TEAM PLAYER!

## JOIN OUR TEAM

TO APPLY  
SCAN OUR  
QR CODE  
NOW



# HEALTH AND WELLNESS

## FUN AND FITNESS

Let's get in shape this summer! A Right Fit trainer will lead our class utilizing various fitness equipment. Please wear comfortable athletic clothes and closed toed athletic shoes. BRING A WATER BOTTLE!

**LOCATION:** Hanson Center  
**DAY:** MONDAY  
**TIME:** 3:45PM-4:30PM  
**DATES:** 6/10 - 8/5  
**AGES:** 13 years old and up  
**FEE:** R - \$133.00 / NR - \$173.00  
**MIN/MAX:** 4/10  
**TRANSPORTATION:** Meet at the Hanson Center  
**CONTACT PERSON:** Mike Baig

## GATOR FIT

What better to spend part of Hump Day with getting in some exercise with friends! Please wear comfortable athletic clothes and closed toed athletic shoes. BRING A WATER BOTTLE! No program 6/19.

**LOCATION:** Hanson Center  
**DAY:** WEDNESDAY  
**TIME:** 3:45PM-4:30PM  
**DATES:** 6/12 - 8/7  
**AGES:** 13 years old and up  
**FEE:** R - \$113.00 / NR - \$173.00  
**MIN/MAX:** 4/10  
**TRANSPORTATION:** Meet at the Hanson Center  
**CONTACT PERSON:** Mike Baig

## FRIDAY FITNESS

Our fitness class have become so popular that we decided to add a third day! This is a chance to get your Friday Fitness in before the weekend! Join our class today! No program 7/5.

**LOCATION:** Hanson Center  
**DAY:** FRIDAY  
**TIME:** 3:45PM-4:30PM  
**DATES:** 6/14- 8/9  
**AGES:** 13 years old and up  
**FEES:** R - \$113.00 / NR - \$173.00  
**MIN/MAX:** 4/12  
**TRANSPORTATION:** Meet at the Hanson Center  
**CONTACT PERSON:** Mike Baig



## FRISBEE GOLF *NEW Program!*

There's more than one way to play golf! We will hit the greens, but with frisbee's. This is a great activity you and your friends. Gateway will provide the frisbee's. Please dress for the weather and wear gym shoes. You may bring a water bottle.

**LOCATION:** Katherine Legge Memorial Park, Hinsdale  
**DAY:** MONDAY  
**TIME:** 11:00AM-12:00PM  
**DATES:** 6/10 - 8/5  
**AGES:** 16 years old and up  
**FEE:** R - \$36.00 / NR - \$60.00  
**MIN/MAX:** 4/12  
**TRANSPORTATION:** Meet at Katherine Legge Memorial Park  
**CONTACT PERSON:** Carolyn Strasen

## PICKLEBALL

It's all the rage right now, so let's give it a try! Meet us inside Oak Brook Park District as we learn how to play the game. Rackets will be provided. Please wear gym shoes and bring a water bottle. No program 7/5.

**LOCATION:** Oak Brook Park District  
**DAY:** FRIDAY  
**TIME:** 12:00PM-1:00PM  
**DATES:** 6/14 - 8/9  
**AGES:** 16 years old and up  
**FEE:** R - \$25.00 / NR - \$47.00  
**MIN/MAX:** 4/12  
**TRANSPORTATION:** Meet at Oak Brook Park District  
**CONTACT PERSON:** Carolyn Strasen

## THURSDAY EVENING SWIM

Cool off after a long summer day, and relax at the beautiful East End pool. Spend the evening hanging out in the pool with your friends from Gateway SRA. Please bring your swimsuit, towel, bottle of water and sunscreen. This program immediately follows Sports Medley. No program 7/4.

**LOCATION:** East End Pool, Elmhurst  
**DAY:** THURSDAY  
**TIME:** 6:30PM-7:15PM  
**DATES:** 6/13 - 8/8  
**AGES:** 8 years old and up  
**FEE:** R - \$23.00 / NR - \$40.00  
**MIN/MAX:** 4/12  
**TRANSPORTATION:** Meet at East End Pool  
**CONTACT PERSON:** Carolyn Strasen



## GATORS BOWLING *NEW LOCATION!*

Lace up your shoes, and get ready to compete! This evening is dedicated to the serious bowler. Athletes will prepare to compete at the Special Olympic regional bowling competition in July.

**LOCATION:** Stardust Bowl, Addison  
**DAY:** MONDAY  
**TIME:** 5:00PM-6:30PM  
**DATES:** 6/10 - 8/5  
**AGES:** 8 years old and up  
**FEE:** R - \$132.00 / NR - \$263.00  
**MIN/MAX:** 4/12  
**TRANSPORTATION:** Hanson Center Drop Off: 4:30PM  
 Hanson Center Pick Up: 6:45PM  
**CONTACT PERSON:** Carolyn Strasen

## GATORS BOCCE *NEW DATES!*

Gators Bocce is back! Come join us for this fun recreational sport. We will play outside when weather is permissible. Otherwise, we will play inside using bean bags. This is a great game to play with your Gateway friends!

**LOCATION:** Hanson Center  
**DAY:** WEDNESDAY  
**TIME:** 3:00PM-3:45PM  
**DATES:** 7/24 - 9/18  
**AGES:** 8 years old and up  
**FEE:** R - \$19.00 / NR - \$38.00  
**MIN/MAX:** 4/12  
**TRANSPORTATION:** Meet at Hanson Center  
**CONTACT PERSON:** Carolyn Strasen

## GATORS GOLF—MONDAYS

It's time to dust off those clubs and hit the course! Whether you are a beginner or an experienced golfer, this is the program for you! Our golf instructors will teach beginners the basic skills of golf. The golfers will work on their driving swings, putting techniques and golf strategy. The Special Olympic golf qualifier will be July 22nd. To be eligible to compete in the qualifier, a golfer must be able to consistently play a hole in 10 strokes or less. No program 7/22.

**LOCATION:** Flagg Creek Golf Course  
**DAY:** MONDAY  
**TIME:** 6:30PM-8:00PM  
**DATES:** 6/10 - 8/5  
**AGES:** 8 years old and up  
**FEE:** R - \$52.00 / NR - \$84.00  
**MIN/MAX:** 4/12  
**TRANSPORTATION:** Meet at Flagg Creek Golf Course  
**CONTACT PERSON:** Carolyn Strasen

## GATORS GOLF—WEDNESDAYS

It's time to dust off those clubs and hit the course! Whether you are a beginner or an experienced golfer, this is the program for you! Our golf instructors will teach beginners the basic skills of golf. The golfers will work on their driving swings, putting techniques and golf strategy. The Special Olympic golf qualifier will be July 22nd. To be eligible to compete in the qualifier, a golfer must be able to consistently play a hole in 10 strokes or less. No program 6/19, 7/3.

**LOCATION:** Flagg Creek Golf Course  
**DAY:** WEDNESDAY  
**TIME:** 6:30PM-8:00PM  
**DATES:** 6/12 - 8/7  
**AGES:** 8 years old and up  
**FEE:** R - \$48.00 / NR - \$77.00  
**MIN/MAX:** 4/12  
**TRANSPORTATION:** Meet at Flagg Creek Golf Course  
**CONTACT PERSON:** Carolyn Strasen

## GATORS VOLLEYBALL

Bump, set, spike! The Gators Volleyball team is ready for another season. We will start practicing our skills, and then dive into the season. Special Olympics requires all athletes to have current and valid medical application. Rosters and schedules will be emailed the week prior to the start of the program.

**LOCATION:** Oak Brook or York Center  
**DAY:** TUESDAY  
**TIME:** 6:30PM-8:00PM  
**DATES:** 8/6 - 10/8  
**AGES:** 16 years old and up  
**FEE:** R - \$60.00 / NR - \$226.00  
**MIN/MAX:** 6/24  
**TRANSPORTATION:** Provided for away games only  
**CONTACT PERSON:** Carolyn Strasen

## UNIFIED BAGS *NEW Program!*

Unified sports has arrived at Gateway! Special Olympic Unified Sports pairs unified partners with Gateway athletes to compete in various sports. Family members, friends and neighbors can all be a unified partner. Bags is an up-and-coming sport. We hope you can join us for a friendly game of bags! Please contact Carolyn Strasen if you are interested in becoming a Unified partner. No program 6/19, 7/3.

**LOCATION:** Oak Brook Park District, Field E  
**DAY:** WEDNESDAY  
**TIME:** 6:00PM-7:00PM  
**DATES:** 6/12 - 8/7  
**AGES:** 12 years old and up  
**FEE:** R - \$56.00 / NR - \$75.00  
**MIN/MAX:** 4/12  
**TRANSPORTATION:** Meet at Oak Brook Park District, Field E  
**CONTACT PERSON:** Carolyn Strasen

# YOUTH PROGRAMS

## SPORTS MEDLEY *NEW Program!*

Please join us as we play a plethora of sports this summer! We will play everything from t-ball/softball to kickball. This program is focused on the fun. Please be dressed for the weather and wear gym shoes. You may bring a water bottle. **No program 7/4.**

**LOCATION:** East End Park, Elmhurst  
**DAY:** THURSDAY  
**TIME:** 5:15PM-6:15PM  
**DATES:** 6/13 - 8/8  
**AGES:** 5-12 years old  
**FEE:** R - \$21.00 / NR - \$43.00  
**MIN/MAX:** 4/12  
**TRANSPORTATION:** Meet at East End Park next to Tennis Courts  
**CONTACT PERSON:** Carolyn Strasen

# GATOR CLUB

## GATOR CLUB

Join us in Gator Club to have fun, meet friends and participate in art, music, fitness, and sport and leisure activities at the Hanson Center. **No program 6/19, 7/3, 7/5.**

### 3 Days per Week

**FEE:** R - \$295.00 / NR - \$350.00

### 2 Days per Week

**FEE:** R - \$197.00 / NR - \$233.00

**LOCATION:** Hanson Center  
**DAY:** MONDAY- FRIDAY *\*DEPENDING ON DAYS CHOSEN\**  
**TIME:** 2:30PM-4:00PM  
**DATES:** 6/10 - 8/16  
**AGES:** 14 years old and up  
**MIN/MAX:** 2/10  
**TRANSPORTATION:** Meet at Hanson Center  
**CONTACT PERSON:** Mike Baig



# BOWLING

## RECREATION BOWLING

Start your week off with doing a Gateway SRA favorite! Come join your friends for a striking good time in your "spare time".

**LOCATION:** Suburbanite Bowl, Westmont  
**DAY:** MONDAY  
**TIME:** 5:00PM-6:15PM  
**DATES:** 6/10 - 8/5  
**AGES:** 8 years old and up  
**FEE:** R - \$132.00 / NR - \$263.00  
**MIN/MAX:** 4/12  
**TRANSPORTATION:** Hanson Center Drop Off: 4:30PM  
Hanson Center Pick Up: 6:30PM  
Or meet at the Bowling Alley  
**CONTACT PERSON:** Mike Baig

## SATURDAY SPLIT

Got some "spare time" on a Saturday morning? Join our bowling league!  
*\*Limited spots available (10). No program 7/6.*

**LOCATION:** Suburbanite Bowl, Westmont  
**DAY:** SATURDAY  
**TIME:** 10:00AM-11:30AM  
**DATES:** 6/15 - 8/10  
**AGES:** 8 years old and up  
**FEE:** R - \$115.00 / NR - \$228.00  
**MIN/MAX:** 4/12  
**TRANSPORTATION:** Hanson Center Drop Off: 9:00AM  
ELC Pick Up: 9:30AM  
Elmhurst Residents must pickup at bowling alley.  
**CONTACT PERSON:** Mike Baig

## SATURDAY BOWLING AND LUNCH BUDDIES

We took 2 of our Saturday favorites and combined them to bring you one amazing fun filled Saturday! First, we will join our Saturday Split bowlers for a striking good time and then head back to the Hanson Center for lunch. **No program 7/6**

**LOCATION:** Suburbanite Bowl, Westmont  
**DAY:** SATURDAY  
**TIME:** 10:00AM-1:00PM  
**DATES:** 6/15 - 8/10  
**AGES:** 8 years old and up  
**FEE:** R - \$191.00 / NR - \$404.00  
**MIN/MAX:** 4/12  
**TRANSPORTATION:** Hanson Center Drop Off: 9:00AM  
Hanson Center Pick Up: 1:15PM  
ELC Drop Off: 9:30AM  
ELC Pick Up: 1:00PM  
**CONTACT PERSON:** Mike Baig



# SOCIAL CLUBS

## TUESDAY TRAVELERS NORTH (ELMHURST PICK UP & DROP OFF LOCATION)

\*Due to popularity we are asking that individuals register for either Tuesday or Thursday\* TGIT! We will travel to various locations and events within the suburbs and the city of Chicago. Do not miss out on your chance to go out on the town during the summer months with your friends! A schedule will be sent out a week prior and will include instructions for the day's activities.

**LOCATION:** Meet at ELC  
**DAY:** TUESDAY  
**TIME:** 10:00AM-3:00PM  
**DATES:** 6/11 - 8/6  
**AGES:** 18 years old and up  
**FEE:** R - \$325.00 / NR - \$710.00  
**MIN/MAX:** 4/12  
**TRANSPORTATION:** ELC Drop Off: 10:00AM  
ELC Pick-up 3:00PM  
**CONTACT PERSON:** Mike Baig

## THURSDAY TRAVELERS NORTH (ELMHURST PICK UP & DROP OFF LOCATION)

\*Due to popularity we are asking that individuals register for either Tuesday or Thursday\* TGIT! We will travel to various locations and events within the suburbs and the city of Chicago. Do not miss out on your chance to go out on the town during the summer months with your friends! A schedule will be sent out a week prior and will include instructions for the day's activities.

**LOCATION:** Meet at ELC  
**DAY:** THURSDAY  
**TIME:** 10:00AM-3:00PM  
**DATES:** 6/13 - 8/8  
**AGES:** 18 years old and up  
**FEE:** R - \$325.00 / NR - \$710.00  
**MIN/MAX:** 4/12  
**TRANSPORTATION:** ELC Drop Off: 10:00AM  
ELC Pick Up: 3:00PM  
**CONTACT PERSON:** Mike Baig

## TUESDAY TRAVELERS SOUTH (HANSON CENTER PICK UP & DROP OFF LOCATION)

\*Due to popularity we are asking that individuals register for either Tuesday or Thursday\* TGIT! We will travel to various locations and events within the suburbs and the city of Chicago. Do not miss out on your chance to go out on the town during the summer months with your friends! A schedule will be sent out a week prior and will include instructions for the day's activities.

**LOCATION:** Meet at Hanson Center  
**DAY:** TUESDAY  
**TIME:** 10:00AM-3:00PM  
**DATES:** 6/11 - 8/6  
**AGES:** 18 years old and up  
**FEE:** R - \$325.00 / NR - \$710.00  
**MIN/MAX:** 4/12  
**TRANSPORTATION:** Hanson Center Drop Off: 10:00AM  
Hanson Center Pick Up: 3:00PM  
**CONTACT PERSON:** Mike Baig

## THURSDAY TRAVELERS SOUTH (HANSON CENTER PICK UP & DROP OFF LOCATION)

\*Due to popularity we are asking that individuals register for either Tuesday or Thursday\* TGIT! We will travel to various locations and events within the suburbs and the city of Chicago. Do not miss out on your chance to go out on the town during the summer months with your friends! A schedule will be sent out a week prior and will include instructions for the day's activities.

**LOCATION:** Meet at Hanson Center  
**DAY:** THURSDAY  
**TIME:** 10:00AM-3:00PM  
**DATES:** 6/13 - 8/8  
**AGES:** 18 years old and up  
**FEE:** R - \$325.00 / NR - \$710.00  
**MIN/MAX:** 4/12  
**TRANSPORTATION:** Hanson Center Drop Off: 10:00AM  
Hanson Center Pick Up: 3:00PM  
**CONTACT PERSON:** Mike Baig



# SOCIAL CLUBS

## WEDNESDAY SUMMER MOVIE SERIES

Back by popular demand...Wednesday Summer Movie Series! Join us every other Wednesday as we enjoy either an old classic, brand new or previously viewed favorite at the York Theater in Elmhurst. Fee includes staff supervision, admission, and light snack. Elmhurst residents meet at the theater at 9:30AM. A schedule will be sent out week prior to program starting.

**LOCATION:** York Theater, Elmhurst  
**DAY:** WEDNESDAY  
**TIME:** 9:00AM-11:45AM  
**DATES:** 6/12, 6/26, 7/10, 7/24  
**AGES:** 13 years old and up  
**FEE:** R - \$70.00 / NR - \$103.00  
**MIN/MAX:** 4/12  
**TRANSPORTATION:** Hanson Center Drop Off: 9:00AM  
Hanson Center Pick Up: 12:15PM  
Elmhurst residents: Meet at York Theater  
**CONTACT PERSON:** Mike Baig

## YOUNG ADULTS SOUTH SOCIAL CLUB

This group is active and on the move! Don't miss out on sensational Friday summer fun. Exciting new activities and some old favorites are planned each week. A schedule will be sent a week before program starts.

**LOCATION:** Meet at Hanson Center  
**DAY:** FRIDAY  
**TIME:** Evening Hours  
**DATES:** 6/14, 7/12, 8/2  
**AGES:** 16-28 years old  
**FEE:** R - \$89.00 / NR - \$146.00  
**MIN/MAX:** 4/12  
**TRANSPORTATION:** Drop off and pick up times will be on the schedule  
Meet at Hanson Center  
**CONTACT PERSON:** Mike Baig

## YOUNG ADULTS NORTH SOCIAL CLUB

Join your friends for Friday night fun! Each week a new and exciting activity is planned especially for you. Our goal is for you to have fun and enjoy summer in the Chicagoland area! A schedule will be sent a week prior to first session.

**LOCATION:** Meet ELC  
**DAY:** FRIDAY  
**TIME:** Evening Hours  
**DATES:** 6/14, 7/12, 8/2  
**AGES:** 16-28 years old  
**FEE:** R - \$89.00 / NR - \$146.00  
**MIN/MAX:** 4/12  
**TRANSPORTATION:** Drop off and pick up times will be on the schedule  
Meet at ELC  
**CONTACT PERSON:** Mike Baig



# SOCIAL CLUBS

## NORTHERN SOCIAL CLUB

Looking for some outgoing and fun-loving peers to spend some time with? Then this social club is for you! Both unique and traditional activities are planned. Something different is on the schedule for you to enjoy. So, sign up early and be ready for some fun! A schedule will be sent out a week prior to program start.

**LOCATION:** ELC - Elmhurst  
**DAY:** FRIDAY  
**TIME:** 6:00PM-8:00PM  
**DATES:** 6/21, 7/26, 8/9  
**AGES:** 29 years old and up  
**FEE:** R - \$89.00 / NR - \$146.00  
**MIN/MAX:** 4/8  
**TRANSPORTATION:** Drop off and pick up time will be on the schedule. Meet at ELC.  
**CONTACT PERSON:** Mike Baig

## SOUTHERN SOCIAL CLUB

If you enjoy getting out and about - this club is for you! Join this energetic group for several Fridays of summer fun! We will do a variety of activities full of fun and adventure! A schedule will be sent out a week prior to start of program.

**LOCATION:** Hanson Center  
**DAY:** FRIDAY  
**TIME:** 6:00PM-8:00PM  
**DATES:** 6/21, 7/26, 8/9  
**AGES:** 29 years old and up  
**FEE:** R - \$89.00 / NR - \$146.00  
**MIN/MAX:** 4/8  
**TRANSPORTATION:** Drop off and pick up time will be on the schedule. Meet at Hanson Center.  
**CONTACT PERSON:** Mike Baig

## DINERS CLUB NORTH

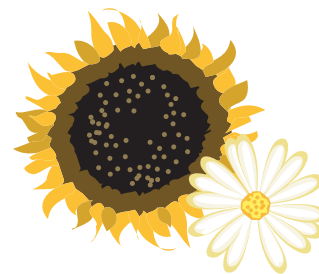
Hungry on a Saturday night? Why not get together with some friends and try local restaurants. A schedule will be sent out a week prior to program.

**LOCATION:** Meet at Restaurant  
**DAY:** SATURDAY  
**TIME:** 6:00PM-7:30PM  
**DATES:** 6/29, 7/13  
**AGES:** 16 years old and up  
**FEE:** R - \$72.00 / NR - \$85.00  
**MIN/MAX:** 4/8  
**TRANSPORTATION:** Meet at Restaurant  
**CONTACT PERSON:** Mike Baig

## DINERS CLUB SOUTH

Hungry on a Saturday night? Why not get together with some friends and try local restaurants. A schedule will be sent out a week prior to program.

**LOCATION:** Meet at Restaurant  
**DAY:** SATURDAY  
**TIME:** 6:00PM-7:30PM  
**DATES:** 6/29, 7/13  
**AGES:** 16 years old and up  
**FEE:** R - \$72.00 / NR - \$85.00  
**MIN/MAX:** 4/8  
**TRANSPORTATION:** Meet at Restaurant  
**CONTACT PERSON:** Mike Baig



# SPECIAL EVENTS

## SIX FLAGS GREAT AMERICA

Do you love the thrill of a fast speed roller coaster? Then this trip is for you. Join us as we head up to Gurnee for a day of riding some of the fastest roller coasters in the Midwest. Fee includes, transportation, entry into the park, and staff supervisor. Please bring money for lunch and snacks.

**LOCATION:** Six Flags Great America, Gurnee  
**DAY:** SUNDAY  
**TIME:** 8:30AM-5:00PM  
**DATES:** June 23, 2024  
**AGES:** 16 years old and up  
**FEE:** R - \$75.00 / NR - \$144.00  
**MIN/MAX:** 4/12  
**TRANSPORTATION:** Hanson Center Drop Off: 8:30AM  
Hanson Center Pick Up: 5:00PM  
ELC Drop Off: 9:00AM  
ELC Pick Up: 4:30PM

**CONTACT PERSON:** Brenna Dill

## 19TH ANNUAL TALENT SHOW

Welcome back to another wonderful year of talent. This year we will be opening Friday's show to families and friends. To make sure everyone gets to showcase their wonderful talents we ask that you limit your act to no more than 5 minutes, so everyone can have a chance to perform. Please practice at home, we will be hosting a practice/run through on Thursday, June 27th, registration is not required to attend Friday Nights Show. We will not be going through our acts but getting the feel of how it's going to run the next night. We will be providing light refreshments on Friday night.

**LOCATION:** Hanson Center  
**DAY:** FRIDAY  
**TIME:** 6:00PM-8:30PM  
**DATES:** June 28, 2024  
**PRACTICE DAY:** THURSDAY, June 27 (NOT REQUIRED) 6PM-8PM  
**AGES:** 16 years old and up  
**FEE:** R - \$24.00 / NR - \$95.00  
**MIN/MAX:** 5/25  
**TRANSPORTATION:** ELC Drop Off: 6:15PM  
ELC Pick Up: 9:00PM

**CONTACT PERSON:** Brenna Dill



## HAWAIIAN LUAU

Aloha Gators! Dress in your favorite island attire and get ready to have a good time. There will be Hawaiian themed games, music, dancing and lots of FUN! Don't miss out on this all-time favorite dance.

**LOCATION:** Hanson Center  
**DAY:** FRIDAY  
**TIME:** 7:00PM-9:00PM  
**DATES:** July 19, 2024  
**AGES:** 16 years old and up  
**FEE:** R - \$20.00 / NR - \$45.00  
**MIN/MAX:** 5/25  
**TRANSPORTATION:** ELC Drop Off: 6:30PM  
ELC Pick Up: 9:15PM  
**CONTACT PERSON:** Brenna Dill

## CHICAGO WHITE SOX GAME

YOU CAN PUT IT ON THE BOARD.....YES!!!! Let's have a Sunday "Fun" Day when the Seattle Mariners come to town to take on our Chicago White Sox. Fee includes, transportation, entry into the stadium, and staff supervision. Please bring money for snacks or souvenirs. Please note \*Guaranteed Rate field is cashless - credit or pre-paid card will be needed if purchasing items.

**LOCATION:** Guaranteed Rate Field, Chicago  
**DAY:** SUNDAY  
**TIME:** 1:00PM GAME TIME  
**DATES:** July 28, 2024  
**AGES:** 16 years old and up  
**FEE:** R - \$80.00 / NR - \$190.00  
**MIN/MAX:** 4/15  
**TRANSPORTATION:** Hanson Center Drop Off: 11:00AM  
Hanson Center Pick Up: 5:00PM  
ELC Drop Off: 11:30PM  
ELC Pick Up: 4:30PM  
**CONTACT PERSON:** Brenna Dill



# SPECIAL EVENTS

## RENAISSANCE FAIRE

Summer is coming!! Travel through the time of Chivalry, Rivalry and Revelry of times. You don't want to miss out on this first time ever experience!! \*Please note: Participants must be comfortable in large crowds, loud noises & comfortable walking.\*

**LOCATION:** Bristol Wisconsin  
**DAY:** SUNDAY  
**TIME:** 8:30AM-4:00PM  
**DATES:** August 11, 2024  
**AGES:** 16 years old and up  
**FEE:** R - \$63.00 / NR - \$122.00  
**MIN/MAX:** 4/12  
**TRANSPORTATION:** Hanson Center Drop Off: 8:30AM  
Hanson Center Pick Up: 4:00PM  
ELC Drop Off: 9:00AM  
ELC Pick Up: 3:30PM  
**CONTACT PERSON:** Brenna Dill

## GATOR SUMMER PICNIC

But, oh, those summer nights! We never like to see summer end so let's enjoy a warm, fun evening with our friends before the summer ends. We'll enjoy a nice cookout meal with a hot dog, salad, chips, drink and dessert.

**LOCATION:** Hanson Center  
**DAY:** SATURDAY  
**TIME:** 4:00PM-6:00PM  
**DATES:** August 17, 2024  
**AGES:** 8 years old and up  
**FEE:** R - \$27.00 / NR - \$50.00  
**MIN/MAX:** 5/25  
**TRANSPORTATION:** ELC Drop Off: 3:30PM  
ELC Pick Up: 6:15PM  
**CONTACT PERSON:** Brenna Dill

## SUMMER VACATION TRIP MACKINAC HERE WE COME!

We are headed to Mackinac City and Mackinac Island! While we are in Michigan we are going to take in some of Michigan's history by visiting Old Mackinac Point Lighthouse, Colonial Fort Michilimackinac, Icebreaker Mackinaw Maritime Museum, Mackinac Island, and maybe hunt for some Petoskey stones.

**DAY:** MONDAY - THURSDAY  
**DATES:** August 19-22, 2024  
**AGES:** 18 years old and up  
**FEE:** R - \$822 / NR - \$1,609  
**MIN/MAX:** Must have 6 to ensure trip is a go  
**TRANSPORTATION:** Depart Hanson Center: 8AM (8/19)  
Return Hanson Center: 6PM (8/22)  
**CONTACT PERSON:** Brenna Dill



# FINANCIAL ASSISTANCE

## Financial Assistance Policy

Gateway Special Recreation believes that every resident should have the opportunity to participate in recreational programs. Gateway will attempt to provide leisure opportunity for residents faced with financial hardship, through affordable fees, as well as through the financial assistance program.

## Qualification and Procedure

Proof of financial need must be demonstrated to qualify for financial assistance. Items that will be considered when evaluating need include; current participation in Medicaid, LSNAP, school lunch or subsidized housing programs, excessive medical bills and/or family income.

Persons requesting financial assistance must complete an application form and submit it to the Gateway SRA each season. Applications will be individually reviewed and evaluated. Applicants will be notified as soon as possible of a decision.

1. All information submitted is confidential.
2. All information submitted on the application must be true and accurate. Financial assistance awarded on the basis of false information supplied by the applicant will be nullified.
3. All Financial assistance will be awarded on the basis of need and availability of financial assistance funds. Gateway SRA reserves the right to approve full or partial funding or deny applicant's request.
4. All requests for financial assistance will be evaluated by the Superintendent.
5. References and Release of Information of permission must be provided by applicant.
6. Applications must be submitted seasonally with program registration.
7. There are limited funds available. Recipients should notify the office if the participant will be unable to attend the program so the dollars could be made available to other participants. There is a maximum of \$100 per participant per season (Winter, Spring, Summer and Fall).
8. No aid is provided for door to door transportation.
9. Payment for the fees not covered by financial aid must accompany the registration form. If aid is not awarded, the difference will need to be paid prior to the start of the program.

# GATEWAY (SRA) REFUND POLICY

1. In the event a program is cancelled by Gateway SRA, a refund will be made to all participants.
2. Request for refunds must be made in writing and will be held as a program credit. If a check is desired a \$5.00 service charge will be applied.
3. Credits must be used before the end of the fiscal year, by the end of June.
4. Request for refunds for weekly programs must be applied for one week prior to the beginning of the program.
5. Requesting a refund does not guarantee a refund will be granted.
6. Refunds will not be granted if a participant chooses not to attend once the program is in the session. This is due to facilities being reserved and commitment made to staff.
7. For special events, requests must be applied for two weeks prior to event.
8. For events/trips involving purchase of tickets, contracted services, or specialized/non-returnable supplies, the cost of these will be deducted from the program refund unless the space is filled by another registrant.
9. Vacation and overnight trips may have a non-refundable deposit that is required.
10. A full or prorated refund will be granted if a medical condition prohibits participation. A doctor's note is required for a refund to be processed.
11. All refunds in the form of a check are subject to a \$5.00 service charge.

***Gateway Special Recreation Association is not responsible for the timeliness of the program guide delivered to your home.***



**FIND US ON FACEBOOK!**

# GATEWAY (SRA) CODE OF CONDUCT

Gateway SRA strives to promote 'fun for everyone'. In order to accomplish this program goal, certain rules are necessary to ensure everyone's safety and enjoyment. To ensure the overall safety for all, Gateway SRA participants and team members are to follow and enforce the agencies Code of Conduct. The Association's code states that participants shall show respect to all participants and team members, refrain from using foul language, refrain from causing bodily harm, and show respect to equipment, supplies and facilities. Additional policies may be developed for specific programs. Gateway SRA reserves the right to dismiss participants whose conduct is disruptive, unsafe or otherwise unacceptable. Each situation will be evaluated on its own merit.

The following are the steps that will take place when a participant of a Gateway SRA program uses foul language, physically aggressive towards another person, or exhibits any other actions that comprises other's safety and security while attending any Gateway SRA activity. The purpose of informing and meeting with families is to quickly address and resolve the situation so that all participants can attend and enjoy Gateway SRA programs optimally.

## #1 Foul Language

If foul language is used during Gateway SRA programs hours then the parents/guardians will be notified. If foul language continues after notifying the parents/guardians, then a meeting will be scheduled with the parents/guardians to discuss the situation. The participant is not allowed to attend Gateway SRA programs until this meeting has occurred.

## #2 Physical Aggression

If any form of aggression occurs at a Gateway SRA program, (i.e. hitting, kicking, pinching, slapping) then the parents/guardians will be notified and a meeting will be scheduled to discuss this situation. The participant is not allowed to attend Gateway SRA programs until this meeting has occurred.

## #3 Compromising Actions

Other actions that compromises the safety, security and wellbeing of others included but not limited to exploitation of any kind, misconduct, and/or misrepresentation during any Gateway SRA activity.

# GENERAL PROGRAM INFORMATION

## Personal Expectations

- Participants need to wear appropriate attire for program participation (i.e. athletic fitness clothing, coats/jackets when appropriate, appropriate swim attire, comfortable appropriate shoes).
- Participants need to have clean, dry clothing. For bowel or bladder inconstant please provide additional clean clothing.
- Participants need to pay attention to body odor and overall appearance. Gateway SRA staff will also stress personal hygiene while participating in programs and will not return participants at the end of a program in an unclean manner.

## Program Readiness

Gateway SRA designs recreation programs with your participation in mind. We calculate several factors such as activities, ages, locations, timing, sensory stimulation, group sizes, intended population to support (i.e. people with autism), participation fees, and team members support availability. We strive to bring the best possible experience to you or your family members through meaningful activities geared specifically to the people we support. Our team of professionals in the field of therapeutic recreation are available to provide assessments and recommendations as to program readiness throughout your enjoyment of our recreation offerings. As you grow within our program so do your recreation interests, we want to make sure we are providing the best possible experiences with measurable goals in our community. Come in or set up a time today to talk more about what we have to offer!

## Participant Illness

For the protection of everyone involved at Gateway SRA, participants and staff will follow the advised illness policy and procedure. Please keep your participant at home or will be sent home if he/she exhibits any of the following symptoms:

- A temperature over 100.3 degree
- Stomach ache accompanied by diarrhea or vomiting
- Must be vomit free for 24hrs before returning to programs
- Any undiagnosed rash
- Sore or discharging eyes or ears
- Profuse nasal discharge (green or yellow)
- A highly contagious condition such as flu, covid19, chicken pox, measles, lice, or cold symptoms. Must be symptom free for 24hrs prior to returning to programs.

## Promptness Is Appreciated

Gateway SRA asks that participant arrive no earlier than designated program time or scheduled pick up time, and that they are picked up promptly at the end of the program or scheduled drop off time. Staff will be unavailable to supervise any unattended participants prior to the start of a program.

# GENERAL PROGRAM INFORMATION

## Inclusive Recreation Services

Gateway staff are available to assist individuals interested in participating in their local park district programs. Gateway SRA and the Ray Graham Association promote and encourage positive interaction between persons with and without disabilities. Inclusion activities provide benefits for all. Please note: Unless the program is designated with an asterisk (\*) siblings who do not have a disability are welcome to register. People with disabilities are always served first.

## Weather Safety

To ensure the safety of Gateway SRA participants in the case of inclement weather, weather safety guidelines have been established. In the event of severe weather, Gateway SRA may make the decision to either cancel programs or transportation in the best interest of participants. Gateway SRA staff will use discretion for all weather warnings and watches. Procedural guidelines have been established for inclement in weather during the Winter/cold and Summer/hot weather.

## Inclement Winter or Cold Weather

- During inclement weather (i.e. snowstorms, winter weather advisories, unsafe road conditions) Gateway SRA will make the determination to cancel transportation or to re-schedule the programs.
- Outdoor programs will be cancelled with temperatures of 10 degrees or zero degree wind chills or less.
- Gateway SRA staff will contact participants and families with any changes regarding the status of program once a decision is made. An outgoing message will be left on the Coordinator's voicemail with program status information an hour prior to program.

## Inclement Summer or Hot Weather

- If there is a Thunderstorm Watch/Thunderstorm Warning in effect during the timeframe of when an outdoor program is scheduled, Gateway SRA staff will closely monitor weather reports. An outgoing message will be left on the Coordinator's voicemail with program status information an hour prior to program.
- If it is determined that unsafe weather is expected during outdoor program time, Gateway SRA will assess the possibility of an alternate indoor activity. If this is not possible, the outdoor program will be cancelled, and re-scheduled, if possible.
- If a change in weather occurs quickly, participants who could not be contacted prior to the program and who have arrived to the program location will be asked to remain at the location with staff until the weather clears and it is safe to travel. Families/guardians will be contacted in this circumstance.
- Programs outdoors or at an indoor location without air conditioning when there is a heat index of 100 degrees or higher will be re-located to an indoor location if possible. If this is not possible, the program will be cancelled, and re-scheduled, if possible.
- Trips/transportation will be cancelled if the heat index is 110 degrees or higher.

## Summer Camp

- If there is severe weather during camp hours, activities will be scheduled for indoors.
- On days when the heat index is 110 degrees or higher, transportation during camp will not be used and indoor activities will be scheduled.

## Corrections

While we try to be accurate in our program books, some avoidable errors or changes to the programs, fees, schedules, and information may occur. Gateway apologizes for any inconvenience.

## ADA Compliance:

Gateway SRA complies with the Americans With Disabilities Act (ADA) to provide equal access and participation for people with disabilities.



# GATEWAY SPECIAL RECREATION SUMMER 2024 REGISTRATION

**REGISTRATION IS ALSO AVAILABLE ONLINE AT [WWW.GATEWAYSRA.COM](http://WWW.GATEWAYSRA.COM)**

**Please PRINT!**

~Use a separate registration form for each individual~  
We accept Check or Credit Card payments.

Name \_\_\_\_\_  
 Address \_\_\_\_\_  
 City \_\_\_\_\_ State \_\_\_\_\_ Zip \_\_\_\_\_  
 Disability \_\_\_\_\_  
 Birth Date \_\_\_\_\_ Age \_\_\_\_\_ Sex \_\_\_\_\_ Race \_\_\_\_\_  
 Park District/Agency \_\_\_\_\_

Parent(s) Name(s) \_\_\_\_\_  
 Parents Address \_\_\_\_\_  
 City \_\_\_\_\_ State \_\_\_\_\_ Zip \_\_\_\_\_  
 E-Mail Address \_\_\_\_\_  
 Home Phone \_\_\_\_\_  
 Work Phone \_\_\_\_\_  
 Cell Phone Mr./Mrs. \_\_\_\_\_  
 Emergency Contact \_\_\_\_\_  
 Emergency Phone \_\_\_\_\_

Program Name	Fee
<i>EXAMPLE:</i> Recreation Bowling	\$ 108
	\$
	\$
	\$
	\$
	\$
	\$
	\$
	\$
	\$
	\$
	\$
<i>Scholarships Awarded or Applicable Credits</i>	\$
<b>Total Due \$</b>	

**~Full payment required at registration~**

**PAYMENT METHODS - CHECK OR CREDIT CARD**

All Checks are to be made payable to RAY GRAHAM ASSOCIATION

**PAYMENT BY MAIL:** Enclose your registration along with your check or your credit card information and send it to  
**Gateway SRA - Hanson Center 15w431 E 59th Street, Burr Ridge, IL 60527 Attn: Ryan Massengill**  
*\*billing address must be included if different then above\**

CHECK: Check Amount \$ \_\_\_\_\_ Check Date \_\_/\_\_/\_\_ Check Number # \_\_\_\_\_

Credit Card: A fee of 3% is assessed to the total.  Visa  MasterCard Card # \_\_\_\_\_ - \_\_\_\_\_ - \_\_\_\_\_ - \_\_\_\_\_

Add 3% Fee \$ \_\_\_\_\_ Exp. Date \_\_\_\_/\_\_\_\_/\_\_\_\_ 3 Digit Security Code \_\_\_\_\_

Signature \_\_\_\_\_ Total Charge \$ \_\_\_\_\_

# WAIVER AND RELEASE OF ALL CLAIMS/HOLD HARMLESS AGREEMENT

## This waiver must be signed and returned with each registration.

Gateway SRA and the Ray Graham Association conduct recreation activities in a safe manner and holds the safety of participants in high regard. Gateway SRA and the Ray Graham Association continually strives to reduce risks and insists that all participants follow safety rules and instructions that are designed to protect the participants' safety. However, participants and parents/guardians of minors registering for activities must recognize that there is an inherent risk of injury when choosing to participate.

You are solely responsible for determining if you or your minor child/ward is physically fit and/or skilled for the activities contemplated by this agreement. It is always advisable to consult a physician before undertaking any physical activity.

### Warning of Risk

Recreational activities are intended to challenge and engage the physical, mental and emotional resources of the participant. Despite careful and proper preparation, instruction, medical advice, conditioning, and equipment, there is still a risk of serious injury when participating in any recreational activity. Understandably, not all hazards and dangers can be foreseen. Depending on the particular activities, participants must understand that certain risks, dangers, and injuries exist due to inclement weather, slipping, falling, poor skill level or conditioning, carelessness, horseplay, unsportsmanlike conduct, premises defects, inadequate or defective equipment, inadequate supervision, instruction, or officiating, and all other circumstances inherent to indoor and outdoor recreation activities exist. In this regard, it must be recognized that it is impossible for Gateway SRA and the Ray Graham Association to guarantee anyone's absolute safety.

Please read this information carefully and be aware that, in signing up and participating in Gateway SRA programs, you will be expressly assuming the risk and legal liability and waiving and releasing all claims for injuries, damages or loss which you or your child/ward might sustain as a result of participating in these programs to include transportation services and vehicle operation.

As a participant in the Ray Graham Association Gateway SRA programs, I recognize and acknowledge that there are certain risks of physical injury to participants in these activities, and I voluntarily agree to assume the full risk of any and all injuries, damages or loss, regardless of severity, that I, my minor child/ward may sustain as a result of participating in these programs. I agree to waive and relinquish any and all claims I may have, as a result of participating in these programs, against the Ray Graham Association Gateway SRA programs, its officers, directors, trustees, agents, volunteers and employees (collectively, the Released Parties) that may result from participating in these programs. I agree to indemnify, save and hold harmless Ray Graham Association and Gateway SRA and the Released Parties, from any and all claims of whatsoever nature arising out of or connect to the activities of these programs."

Precaution will be taken to protect the safety of each participant. In the event of an emergency, the medical release document shall apply. In the event of any emergency, I authorize Gateway SRA and Ray Graham Association employees to secure from any licensed hospital, physician and/or medical personnel any treatment deemed necessary for me or my child/ward's immediate care. I further understand that payment for medical attention and/or hospitalization will be the sole responsibility of the individual in question and/or their parent or guardian.

I have read and understand the warning of risk, assumption or risk and waiver and release of all claims.

In consideration of being allowed and choosing to participate in Ray Graham Association programs (Monarch, Community Learning Centers, Gateway SRA and Therapeutic Horsemanship), the undersigned acknowledges, appreciates, and agrees that:

1. Participation includes possible exposure to an illness from infectious diseases including but not limited to MRSA, influenza, and COVID-19. While RGA is implementing specific guidelines and practices that may reduce this risk, the risk of serious illness and death does exist; and,
2. I KNOWINGLY AND FREELY ASSUME ALL SUCH RISKS, both known and unknown, EVEN IF ARISING FROM THE NEGLIGENCE OF THE RELEASES or others, and assume full responsibility for my participation; and,
3. I willingly agree to comply with the stated and customary terms and conditions for participation in regard to protection against and prevention of infectious diseases. If, however, I observe and any unusual or significant hazard during my presence or participation, I will remove my loved one from participation and report such to RGA Team Member; and,
4. I acknowledge that although RGA may provide items of Personal Protective Equipment (PPE) in case I forget mine, it is a requirement and my responsibility to ensure that I have appropriate face coverings, hand sanitizer, and all other PPE that may be necessary to keep me safe. I hold harmless, RGA, for all use, and non-use, of provided PPE.
5. I acknowledge and agree that if I or anyone I live with begin to show symptoms associated with COVID-19, I will notify my RGA Team and I understand I temporarily may not be able to participate in activities.
6. I, for myself/loved one and on behalf of my heirs, assigns, personal representatives and next of kin, HEREBY RELEASE AND HOLD HARMLESS RGA and their officers, officials, agents, and/or employees, other participants, and if applicable, owners and lessors of premises used to provide services ("RELEASES"), WITH RESPECT TO ANY AND ALL ILLNESS, DISABILITY, DEATH, or loss or damage to person or property, WHETHER ARISING FROM THE NEGLIGENCE OF RELEASES OR OTHERWISE, to the fullest extent permitted by law.

I HAVE READ SAFETY GUIDELINES FOR RESUMING SERVICES, THIS RELEASE OF LIABILITY AND ASSUMPTION OF RISK AGREEMENT, FULLY UNDERSTAND ITS TERMS, UNDERSTAND THAT I HAVE GIVEN UP SUBSTANTIAL RIGHTS BY SIGNING IT, AND SIGN IT FREELY AND VOLUNTARILY WITHOUT ANY INDUCEMENT.

FOR PEOPLE SUPPORTED OF MINORITY AGE OR ADULTS REQUIRING LEGAL REPRESENTATION/SUPPORT (UNDER AGE 18 ADULT UNABLE TO CONSENT ON THEIR BEHALF)

This is to certify that I, as parent/guardian, with legal responsibility for this participant, have read and explained the provisions in this waiver/release to my child/loved one including the risks of presence and participation and his/her personal responsibilities for adhering to the rules and regulations for protection against and prevention of communicable diseases. Furthermore, my child/loved one understands and accepts these risks and responsibilities. I for myself, my spouse, and child/loved one do consent and agree to his/her release provided above for all the Releases and myself, my spouse, and child/person supported do release and agree to indemnify and hold harmless the Releases for any and all liabilities incident to my minor child's/loved one's presence or participation in these activities as provided above, EVEN IF ARISING FROM THEIR NEGLIGENCE, to the fullest extent provided by law.

I have read and understand the warning of risk, assumption or risk and waiver and release of all claims.

Signature of Adult participant (if over 18) \_\_\_\_\_ Date \_\_\_\_\_

Parent/Guardian Signature \_\_\_\_\_ Date \_\_\_\_\_

**Gateway Special Recreation Association  
Participant Information Form**

**Health and Contact Information**

Participant Name: _____	DOB: _____
Participant Home Phone: _____	
Emergency Contact: _____	Relationship: _____
Phone Contact: _____	2 <sup>nd</sup> Phone Contact: _____
Doctor Name: _____	Doctor Phone: _____
Food Allergies    Yes <input type="checkbox"/> No <input type="checkbox"/> If yes, please list: _____	
Does the participant have seizures:    Yes <input type="checkbox"/> No <input type="checkbox"/> If yes, complete Seizure Questionnaire on back of page	
Describe any other medical conditions or side effects from medication that staff should know about: _____ _____	
Health Insurance Carrier and Plan Type: _____	
Policy Number: _____	ID Number: _____
Policy Carrier: _____	

**Behavior and Participation Information**

How does the participant prefer to engage in leisure/recreation activities:			
Alone <input type="checkbox"/>	With 1 or 2 others <input type="checkbox"/>	Group Setting <input type="checkbox"/>	
Do any of the following environmental factors bother or upset the participant (check all that apply):			
Loud Noises <input type="checkbox"/>	Bright Lights <input type="checkbox"/>	Traveling on a vehicle <input type="checkbox"/>	
Outdoors <input type="checkbox"/>	Close Proximity to Others <input type="checkbox"/>		
Crowds <input type="checkbox"/>	Other Participants Becoming Upset <input type="checkbox"/>		
Other <input type="checkbox"/>	Describe: _____		
Does the participant initiate using a restroom when necessary and do so independently?    Yes <input type="checkbox"/> No <input type="checkbox"/>			
If no, describe schedule/assistance needed: _____			
Is there a behavior issue that poses a safety concern for the participant and/or others?    Yes <input type="checkbox"/> No <input type="checkbox"/>			
If yes, please describe: _____			

**Complete Other Side and Return Completed Form Along with Registration Form**

How frequently does the behavior(s) occur? Hourly  Daily  Weekly  Monthly

When this behavior occurs, what strategies are most helpful in calming the person and keeping everyone safe?

---

---

Are there any strategies or techniques that staff should avoid using? Yes  No  If yes, describe:

---

---

What does the participant find positively reinforcing? \_\_\_\_\_

---

### Seizure Information

**In the event of a seizure lasting more than 1 minute or other medical emergency, Gateway staff will contact 911. The below information will be given to First Responders.**

Does the participant have a history of seizure activity? Yes  No  If yes, complete below:

Current Seizure Medication Name

Dosage

Seizure type (please check):

Absence

Simple Partial

Complex Partial

Atonic

Generalized

How often do seizures generally occur:

More than 1 seizure daily

1 or more seizures weekly

Monthly

Less than monthly

How many minutes does a typical seizure last: \_\_\_\_\_

Describe any symptoms that may occur prior to the onset of a seizure (i.e., smells, stomach pain, fear, sounds) and/or any other important information about seizure activity: \_\_\_\_\_

---

**Return Completed Form Along with Registration Form**

# Gateway Special Recreation Association

## Financial Assistance Application

This form must be completed and returned to GSRA. Applications received prior to the registration deadline will be given first consideration for assistance. Financial assistance funds are limited. Partial, delayed or divided payments are encouraged whenever possible. All information is confidential and not a matter for public records, however references will be checked. Following verification of information supplied, applicant will be notified as to disposition of request.

Name of Participant \_\_\_\_\_

Address \_\_\_\_\_

City/State/Zip \_\_\_\_\_

Home Phone # \_\_\_\_\_ Daytime Phone # \_\_\_\_\_

Park District/Village \_\_\_\_\_ Township \_\_\_\_\_

Person Completing Application \_\_\_\_\_

Relationship to Participant \_\_\_\_\_

**Type of Assistance Requested**

\_\_\_\_\_ Partial Financial assistance                      Amount able to Pay \$ \_\_\_\_\_

\_\_\_\_\_ Full Financial assistance

\_\_\_\_\_ Payment Plan: 50% of full fees due upon registration, balance due upon first session of class

**Assistance Requested For:**

Program Name	Program Code	Program Fee
Total Dollar Amount Requested		\$ _____
<b>GSRA Financial Assistance Award</b>		\$ _____

*Please check items to indicate financial need and attach documentation*

\_\_\_\_\_ Public Aid/Medicaid                      Aid No. \_\_\_\_\_

\_\_\_\_\_ Food Stamps                                      Case No. \_\_\_\_\_

\_\_\_\_\_ School Lunch Program                      School \_\_\_\_\_

\_\_\_\_\_ Subsidized Housing

\_\_\_\_\_ Household family income in compliance with Cook or DuPage County Section 8 Assistance Payment Program. Enclose copy of recent check stub(s).

\_\_\_\_\_ Excessive Medical Bills. Please explain:  
 \_\_\_\_\_  
 \_\_\_\_\_

\_\_\_\_\_ Other Financial Difficulties. Please explain:  
 \_\_\_\_\_  
 \_\_\_\_\_

## Gateway Special Recreation Association

Do you receive or participate in the following programs:

- \_\_\_\_\_ Home Based Services
- \_\_\_\_\_ Dupage Work Group
- \_\_\_\_\_ Respite Voucher

References: Please provide two references (i.e. social service agencies, schools, employer, physicians or other) must be provided and permission given below for them to supply GSRA with information regarding applicant's financial need. Provision of detailed reference information below will expedite the process.

<u>Agency Name</u>	<u>Address</u>	<u>City</u>	<u>Zip</u>	<u>Phone</u>	<u>Contact Name</u>
--------------------	----------------	-------------	------------	--------------	---------------------

1. \_\_\_\_\_

2. \_\_\_\_\_

Release of Information Permission:  Yes  No

For references provided to supply GSRA with information regarding financial need.

I certify that the above information is true, correct and complete, and authorize Gateway Special Recreation Association to conduct reference checks to verify accuracy of information.

---

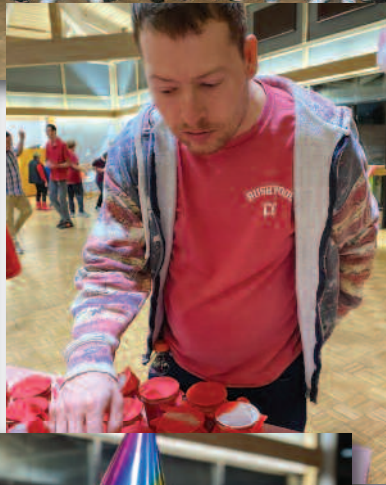
Signature

Date

Printed Name

# GATEWAY SRA WINTER/SPRING HIGHLIGHTS 2024!

**Eat. Sleep. Play. Grow.**



***Thank you for a great season at Gateway SRA 2024!***



Ray Graham  
Association®  
Ray Graham Association  
Hanson Center  
15W431 59th St  
Burr Ridge, IL 60527



NON PROFIT ORG.  
U.S. POSTAGE  
**PAID**  
ADDISON, IL  
PERMIT NO. 39

*If you no longer benefit from receiving this brochure,  
please call the Gateway office at 630.325.3857,  
press 2 for GSRA.*



**Hanson Center: 630.325.3857,  
press 2 for GSRA  
Fax: 630.325.3891  
[www.gatewaysra.com](http://www.gatewaysra.com)**

## **DATES TO REMEMBER**

***Summer Registration Deadline: June 3***

### ***JUNE***

***23 – Six Flags Great America, 28 – Annual Talent Show***

### ***JULY***

***\* 4TH OF JULY HOLIDAY - NO GATEWAY SRA PROGRAMS \****

***19 – Hawaiian Luau***

***28 – Chicago White Sox Game***

### ***AUGUST***

***11 – Renaissance Faire, 17 – Gator Summer Picnic***

***19-22 – SUMMER VACATION TRIP***

